

# SCHEDULE B

# 2019 PDC RESIDENTIAL RECYCLING PICKUP



We are picking up recycling **EVERY OTHER WEEK**. Your schedule is shown below.

Recycling will be picked up the **same day as garbage service**. For collection day information go to [www.PeoriaPicksUp.com](http://www.PeoriaPicksUp.com)

<p><b>JANUARY</b></p> <table border="1"> <tr><td></td><td>31</td><td>1</td><td>2</td><td>3</td><td>4</td><td>5</td></tr> <tr><td>6</td><td>7</td><td>8</td><td>9</td><td>10</td><td>11</td><td>12</td></tr> <tr><td>13</td><td>14</td><td>15</td><td>16</td><td>17</td><td>18</td><td>19</td></tr> <tr><td>20</td><td>21</td><td>22</td><td>23</td><td>24</td><td>25</td><td>26</td></tr> <tr><td>27</td><td>28</td><td>29</td><td>30</td><td>31</td><td></td><td></td></tr> </table> <p>ALL PICKUPS ONE DAY LATE due to New Year's Day</p>		31	1	2	3	4	5	6	7	8	9	10	11	12	13	14	15	16	17	18	19	20	21	22	23	24	25	26	27	28	29	30	31			<p><b>FEBRUARY</b></p> <table border="1"> <tr><td></td><td></td><td></td><td></td><td></td><td>1</td><td>2</td></tr> <tr><td>3</td><td>4</td><td>5</td><td>6</td><td>7</td><td>8</td><td>9</td></tr> <tr><td>10</td><td>11</td><td>12</td><td>13</td><td>14</td><td>15</td><td>16</td></tr> <tr><td>17</td><td>18</td><td>19</td><td>20</td><td>21</td><td>22</td><td>23</td></tr> <tr><td>24</td><td>25</td><td>26</td><td>27</td><td>28</td><td></td><td></td></tr> </table>						1	2	3	4	5	6	7	8	9	10	11	12	13	14	15	16	17	18	19	20	21	22	23	24	25	26	27	28			<p><b>MARCH</b></p> <table border="1"> <tr><td></td><td></td><td></td><td></td><td></td><td></td><td>1</td><td>2</td></tr> <tr><td>3</td><td>4</td><td>5</td><td>6</td><td>7</td><td>8</td><td>9</td><td></td></tr> <tr><td>10</td><td>11</td><td>12</td><td>13</td><td>14</td><td>15</td><td>16</td><td></td></tr> <tr><td>17</td><td>18</td><td>19</td><td>20</td><td>21</td><td>22</td><td>23</td><td></td></tr> <tr><td>24</td><td>25</td><td>26</td><td>27</td><td>28</td><td>29</td><td>30</td><td></td></tr> <tr><td>31</td><td></td><td></td><td></td><td></td><td></td><td></td><td></td></tr> </table>							1	2	3	4	5	6	7	8	9		10	11	12	13	14	15	16		17	18	19	20	21	22	23		24	25	26	27	28	29	30		31								<p><b>APRIL</b></p> <table border="1"> <tr><td></td><td>1</td><td>2</td><td>3</td><td>4</td><td>5</td><td>6</td></tr> <tr><td>7</td><td>8</td><td>9</td><td>10</td><td>11</td><td>12</td><td>13</td></tr> <tr><td>14</td><td>15</td><td>16</td><td>17</td><td>18</td><td>19</td><td>20</td></tr> <tr><td>21</td><td>22</td><td>23</td><td>24</td><td>25</td><td>26</td><td>27</td></tr> <tr><td>28</td><td>29</td><td>30</td><td></td><td></td><td></td><td></td></tr> </table>		1	2	3	4	5	6	7	8	9	10	11	12	13	14	15	16	17	18	19	20	21	22	23	24	25	26	27	28	29	30				
	31	1	2	3	4	5																																																																																																																																																						
6	7	8	9	10	11	12																																																																																																																																																						
13	14	15	16	17	18	19																																																																																																																																																						
20	21	22	23	24	25	26																																																																																																																																																						
27	28	29	30	31																																																																																																																																																								
					1	2																																																																																																																																																						
3	4	5	6	7	8	9																																																																																																																																																						
10	11	12	13	14	15	16																																																																																																																																																						
17	18	19	20	21	22	23																																																																																																																																																						
24	25	26	27	28																																																																																																																																																								
						1	2																																																																																																																																																					
3	4	5	6	7	8	9																																																																																																																																																						
10	11	12	13	14	15	16																																																																																																																																																						
17	18	19	20	21	22	23																																																																																																																																																						
24	25	26	27	28	29	30																																																																																																																																																						
31																																																																																																																																																												
	1	2	3	4	5	6																																																																																																																																																						
7	8	9	10	11	12	13																																																																																																																																																						
14	15	16	17	18	19	20																																																																																																																																																						
21	22	23	24	25	26	27																																																																																																																																																						
28	29	30																																																																																																																																																										
<p><b>MAY</b></p> <table border="1"> <tr><td></td><td></td><td></td><td>1</td><td>2</td><td>3</td><td>4</td></tr> <tr><td>5</td><td>6</td><td>7</td><td>8</td><td>9</td><td>10</td><td>11</td></tr> <tr><td>12</td><td>13</td><td>14</td><td>15</td><td>16</td><td>17</td><td>18</td></tr> <tr><td>19</td><td>20</td><td>21</td><td>22</td><td>23</td><td>24</td><td>25</td></tr> <tr><td>26</td><td>27</td><td>28</td><td>29</td><td>30</td><td>31</td><td></td></tr> </table> <p>NO CHANGE in recycling due to Memorial Day</p>				1	2	3	4	5	6	7	8	9	10	11	12	13	14	15	16	17	18	19	20	21	22	23	24	25	26	27	28	29	30	31		<p><b>JUNE</b></p> <table border="1"> <tr><td></td><td></td><td></td><td></td><td></td><td></td><td>1</td></tr> <tr><td>2</td><td>3</td><td>4</td><td>5</td><td>6</td><td>7</td><td>8</td></tr> <tr><td>9</td><td>10</td><td>11</td><td>12</td><td>13</td><td>14</td><td>15</td></tr> <tr><td>16</td><td>17</td><td>18</td><td>19</td><td>20</td><td>21</td><td>22</td></tr> <tr><td>23</td><td>24</td><td>25</td><td>26</td><td>27</td><td>28</td><td>29</td></tr> <tr><td>30</td><td></td><td></td><td></td><td></td><td></td><td></td></tr> </table>							1	2	3	4	5	6	7	8	9	10	11	12	13	14	15	16	17	18	19	20	21	22	23	24	25	26	27	28	29	30							<p><b>JULY</b></p> <table border="1"> <tr><td></td><td>1</td><td>2</td><td>3</td><td>4</td><td>5</td><td>6</td></tr> <tr><td>7</td><td>8</td><td>9</td><td>10</td><td>11</td><td>12</td><td>13</td></tr> <tr><td>14</td><td>15</td><td>16</td><td>17</td><td>18</td><td>19</td><td>20</td></tr> <tr><td>21</td><td>22</td><td>23</td><td>24</td><td>25</td><td>26</td><td>27</td></tr> <tr><td>28</td><td>29</td><td>30</td><td>31</td><td></td><td></td><td></td></tr> </table> <p>THURS-FRI PICKUPS ONE DAY LATE due to 4th of July</p>		1	2	3	4	5	6	7	8	9	10	11	12	13	14	15	16	17	18	19	20	21	22	23	24	25	26	27	28	29	30	31				<p><b>AUGUST</b></p> <table border="1"> <tr><td></td><td></td><td></td><td></td><td>1</td><td>2</td><td>3</td></tr> <tr><td>4</td><td>5</td><td>6</td><td>7</td><td>8</td><td>9</td><td>10</td></tr> <tr><td>11</td><td>12</td><td>13</td><td>14</td><td>15</td><td>16</td><td>17</td></tr> <tr><td>18</td><td>19</td><td>20</td><td>21</td><td>22</td><td>23</td><td>24</td></tr> <tr><td>25</td><td>26</td><td>27</td><td>28</td><td>29</td><td>30</td><td>31</td></tr> </table>					1	2	3	4	5	6	7	8	9	10	11	12	13	14	15	16	17	18	19	20	21	22	23	24	25	26	27	28	29	30	31						
			1	2	3	4																																																																																																																																																						
5	6	7	8	9	10	11																																																																																																																																																						
12	13	14	15	16	17	18																																																																																																																																																						
19	20	21	22	23	24	25																																																																																																																																																						
26	27	28	29	30	31																																																																																																																																																							
						1																																																																																																																																																						
2	3	4	5	6	7	8																																																																																																																																																						
9	10	11	12	13	14	15																																																																																																																																																						
16	17	18	19	20	21	22																																																																																																																																																						
23	24	25	26	27	28	29																																																																																																																																																						
30																																																																																																																																																												
	1	2	3	4	5	6																																																																																																																																																						
7	8	9	10	11	12	13																																																																																																																																																						
14	15	16	17	18	19	20																																																																																																																																																						
21	22	23	24	25	26	27																																																																																																																																																						
28	29	30	31																																																																																																																																																									
				1	2	3																																																																																																																																																						
4	5	6	7	8	9	10																																																																																																																																																						
11	12	13	14	15	16	17																																																																																																																																																						
18	19	20	21	22	23	24																																																																																																																																																						
25	26	27	28	29	30	31																																																																																																																																																						
<p><b>SEPTEMBER</b></p> <table border="1"> <tr><td>1</td><td>2</td><td>3</td><td>4</td><td>5</td><td>6</td><td>7</td></tr> <tr><td>8</td><td>9</td><td>10</td><td>11</td><td>12</td><td>13</td><td>14</td></tr> <tr><td>15</td><td>16</td><td>17</td><td>18</td><td>19</td><td>20</td><td>21</td></tr> <tr><td>22</td><td>23</td><td>24</td><td>25</td><td>26</td><td>27</td><td>28</td></tr> <tr><td>29</td><td>30</td><td></td><td></td><td></td><td></td><td></td></tr> </table> <p>NO CHANGE in recycling due to Labor Day</p>	1	2	3	4	5	6	7	8	9	10	11	12	13	14	15	16	17	18	19	20	21	22	23	24	25	26	27	28	29	30						<p><b>OCTOBER</b></p> <table border="1"> <tr><td></td><td></td><td>1</td><td>2</td><td>3</td><td>4</td><td>5</td></tr> <tr><td>6</td><td>7</td><td>8</td><td>9</td><td>10</td><td>11</td><td>12</td></tr> <tr><td>13</td><td>14</td><td>15</td><td>16</td><td>17</td><td>18</td><td>19</td></tr> <tr><td>20</td><td>21</td><td>22</td><td>23</td><td>24</td><td>25</td><td>26</td></tr> <tr><td>27</td><td>28</td><td>29</td><td>30</td><td>31</td><td></td><td></td></tr> </table>			1	2	3	4	5	6	7	8	9	10	11	12	13	14	15	16	17	18	19	20	21	22	23	24	25	26	27	28	29	30	31			<p><b>NOVEMBER</b></p> <table border="1"> <tr><td></td><td></td><td></td><td></td><td></td><td></td><td>1</td><td>2</td></tr> <tr><td>3</td><td>4</td><td>5</td><td>6</td><td>7</td><td>8</td><td>9</td><td></td></tr> <tr><td>10</td><td>11</td><td>12</td><td>13</td><td>14</td><td>15</td><td>16</td><td></td></tr> <tr><td>17</td><td>18</td><td>19</td><td>20</td><td>21</td><td>22</td><td>23</td><td></td></tr> <tr><td>24</td><td>25</td><td>26</td><td>27</td><td>28</td><td>29</td><td>30</td><td></td></tr> </table> <p>NO CHANGE in recycling due to Thanksgiving</p>							1	2	3	4	5	6	7	8	9		10	11	12	13	14	15	16		17	18	19	20	21	22	23		24	25	26	27	28	29	30		<p><b>DECEMBER</b></p> <table border="1"> <tr><td>1</td><td>2</td><td>3</td><td>4</td><td>5</td><td>6</td><td>7</td></tr> <tr><td>8</td><td>9</td><td>10</td><td>11</td><td>12</td><td>13</td><td>14</td></tr> <tr><td>15</td><td>16</td><td>17</td><td>18</td><td>19</td><td>20</td><td>21</td></tr> <tr><td>22</td><td>23</td><td>24</td><td>25</td><td>26</td><td>27</td><td>28</td></tr> <tr><td>29</td><td>30</td><td>31</td><td></td><td></td><td></td><td></td></tr> </table> <p>NO CHANGE in recycling due to Christmas</p>	1	2	3	4	5	6	7	8	9	10	11	12	13	14	15	16	17	18	19	20	21	22	23	24	25	26	27	28	29	30	31												
1	2	3	4	5	6	7																																																																																																																																																						
8	9	10	11	12	13	14																																																																																																																																																						
15	16	17	18	19	20	21																																																																																																																																																						
22	23	24	25	26	27	28																																																																																																																																																						
29	30																																																																																																																																																											
		1	2	3	4	5																																																																																																																																																						
6	7	8	9	10	11	12																																																																																																																																																						
13	14	15	16	17	18	19																																																																																																																																																						
20	21	22	23	24	25	26																																																																																																																																																						
27	28	29	30	31																																																																																																																																																								
						1	2																																																																																																																																																					
3	4	5	6	7	8	9																																																																																																																																																						
10	11	12	13	14	15	16																																																																																																																																																						
17	18	19	20	21	22	23																																																																																																																																																						
24	25	26	27	28	29	30																																																																																																																																																						
1	2	3	4	5	6	7																																																																																																																																																						
8	9	10	11	12	13	14																																																																																																																																																						
15	16	17	18	19	20	21																																																																																																																																																						
22	23	24	25	26	27	28																																																																																																																																																						
29	30	31																																																																																																																																																										

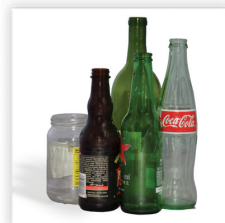
■ Recycling pickup    ■ Holiday



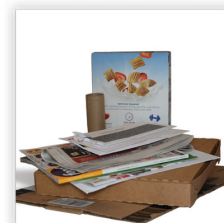
**Aluminum and Steel Cans**  
empty and rinse



**Food and Beverage Cartons**  
empty and replace cap



**Bottles and Jars**  
empty and rinse



**Mixed Paper, Newspaper, Magazines, and Flattened Cardboard**



**Kitchen, Laundry, Bath: Bottles and Containers**  
empty and replace cap

Items collected at curbside are picked up in a single-stream process; it is no longer necessary to separate your recyclables for collection. All containers must be rinsed out before pickup. This will reduce contamination and odors. Recyclables must be placed in containers approved and provided by PDC Services.

**NO!**



Do Not Bag Recyclables  
No Garbage



No Plastic Bags or Plastic Wrap  
(return to retail)



No Food or Liquid  
(empty all containers)



No Clothing or Linens  
(use donation programs)



No Tangles  
(no hoses, wires, chains, or electronics)



**QUESTIONS OR COMMENTS?**

309-688-0760 • [WWW.PDCAREA.COM](http://WWW.PDCAREA.COM)